

For use with LEOTAX f1.5 - Y1, Y2, R1, UV

For use with LEOTAX f3.5 - Y1, Y2, Y3, R0, R1, P00, POB, UV

**Y1 Lt. Yellow, Y2 Yellow, Y3 Dk. Yellow**

For increased color contrast with landscapes, snowscapes, seascapes, snow studies, especially with pan-emulsion film.

**R0 Light Red, R1 Red**

For clearer reproduction of hazy distance views when used with panemulsion film and for infra-red photography when used with infra-red film.

**P00 Yellow Green**

Superior to yellow filters for portrait work.

**POB Light Blue**

When used with color film, gives correct coloring under tungsten lighting. Also for better results for early morning or late evening shots.

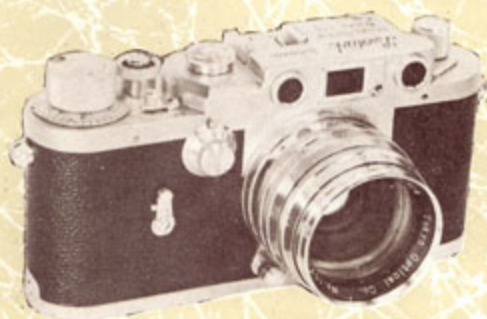
**UV Achromaticity**

Eliminates ultra-violet rays. No change in exposure time.

# Leotax

## MODEL F

35 mm CAMERA



**SOW**

### SHOWA OPTICAL WORKS LTD.

MANUFACTURERS OF THE CAMERAS

LEOTAX, SEMI-LEOTAX, & THEIR ACCESSORIES

CABLE ADDRESS: "LEOTAX" TOKYO

NO. 919, 4-CHOME, NIIJUKU-MACHI,

KATSUSHIKA-KU, TOKYO, JAPAN

#### Long Focus Lens

"Topcor" 1:3.5 90mm.

A newly-produced lens possessing both sharpness and brightness.



#### Telephoto Lens

"Topcor" 1:3.5 135mm.

The second elements of this superior lens is extremely thick and serves to bring about a uniformity of the image while eliminating chromatic aberration, coma and distortion.



	Lens construction	Lens Type	Capacity of angle	Aperture of the diaphragm
Topcor f1.5 50mm -a-	7 elements	standard	46°	1.5-16
Topcor f3.5 50mm -b-	4 $\phi$	standard	46°	3.5-16
Topcor f2 50mm -c-	6 $\phi$	standard	46°	2-16 equal-stop-spacing
Topcor f2.8 35mm -d-	6 $\phi$	wide angle	64°	2.8-16 equal-stop-spacing
Topcor f3.5 90mm -e-	3 $\phi$	long focus	27°	3.5-22
Topcor f3.5 135mm -f-	4 $\phi$	telephoto	18°	3.5-22 equal-stop-spacing

Attachment size & filter series No.

-a-	40mm $\phi$	VII
-b-	36mm $\phi$	
	the outside diameter	
-c-	40mm $\phi$	VI
-d-	40mm $\phi$	VII
	34mm $\phi$	VI
-e-	34mm $\phi$	VI
-f-	46mm $\phi$	VII

### Wide Angle Lens

"Topcor" 1:2.8 35mm.

Rapidly replacing the standard lenses in popularity, this wide-angle lens produces a delicately soft image and sharp focusing.



### Accessories:

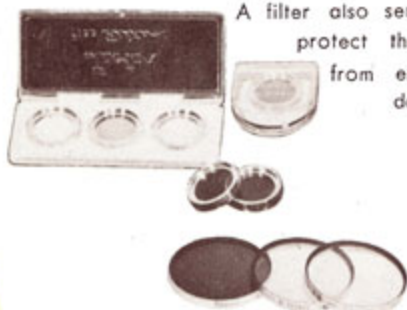
A special lens hood and color filters are also available for use with the LEOTAX Model F.

The lens Hood protects the lens from lateral light and thus simplifies the problem of selecting camera position. It is available in two sizes for both the "Topcor" f1.5 and f3.5 lenses and is housed, when not in use, in a leather case.



The filters increase color contrasts for cloud studies, snow or landscapes. Ultraviolet rays are absorbed or eliminated and the filter thus corrects the difference between the naked eye and camera lens.

A filter also serves to protect the lens from external damage.



### Standard Lens

"Topcor" 1:1.5 50mm.

This lens was developed in 1940 by the Tokyo Optical Company as an improved type possessing the characteristics of Sonnar and Summar lenses. It has a click stop diaphragm.



### Standard Lens

"Topcor" 1:3.5 50mm.

A widely-acclaimed Tessar-type lens, capable of producing a sharp image in all subjects and particularly suited for color photography.





# Leotar

MODEL

F



#### As to a fresh Topcor Lenses

The "Topcor" Standard, Telephoto, Long Focus and Wide Angle lenses are coated on all glass-to-air surfaces, insuring crisp, sparkling pictures under all conditions. They are all corrected to the greatest extent for lens aberration such as astigmatism, coma, spherical aberration and distortion, and feature superior resolving power.



## THE LEOTAX MODEL F

Embodying completely new styling, the LEOTAX Model F is a precision-built 35mm camera which is both beautiful and eminently practical.

The high power and efficiency which characterizes this camera will give full satisfaction, while its ability to surmount all photographic problems makes it a favorite with camera fans.

The body is made of light, diecast metal and is covered with genuine black leather. All exterior metal parts feature a satin finish.

This attractive combination of black and silver, combined with the well-proportioned design, gives the camera a particularly smart appearance.

### MODEL F FEATURES:

Picture size: 24mmx36mm (approximately 1" x 1½")

Exposures: 36exp,

Lens: Topcor 1:3.5 50mm or Topcor 1:1.5 50mm

Shutter: Focal plane shutter with 15 speeds, ranging from T. B. 1, ½-1/1000 sec.

Range-finder combined with View-finder and coupled to the lens.

Automatic Double-Exposure Prevention Device. (In order to make deliberate double exposures, shutter dial must be wound anticlockwise until it stops)

Automatic Film-Winding and Shutter-Setting Device.

Built-in Flash Synchronizer(X-F type)with Synchro-Change Lever on left side of camera face.

Automatic Exposure Counter.

Sensitivity Rating Indicator (ASA) built-in to Shutter Setting and Film Winding Knob.

Red Mark on Distance Scale for infra-red photography.

Focus Depth Scale.

All the above features are methodically arranged in the most compact and efficient grouping.



### Interchangeable Lenses

The LEOTAX Model F features "Topcor" lenses, produced by Tokyo Optical Company, Ltd., one of the oldest and most advanced optical instrument manufacturers in Japan.

